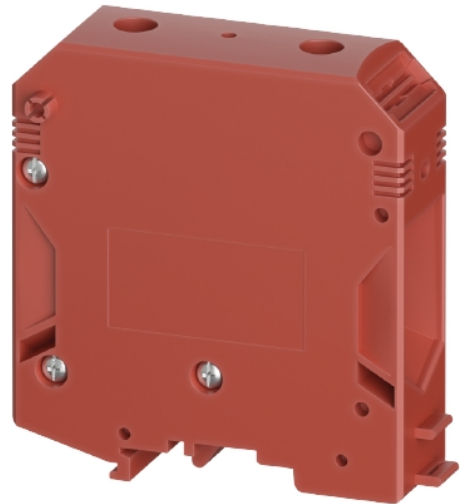


Data sheet

Commercial Art.No.: 5D.S95.0055.5

feed-through terminal WTN 95 RT

feed-through terminal WTN 95 RT rated voltage 1000 V, rated current 232 A, screw connection, number of levels 1, number of clamp positions per level 2, nominal cross section 95 mm², connectable conductor cross section fine stranded without cable end sleeve 35mm² - 95mm², mounting method DIN rail (top hat rail), color red, width/grid dimension 25 mm, inflammability class of insulation material acc. with ul94 V0



Commercial Art.No.	5D.S95.0055.5
EAN	4049088725678
Order Unit	20

certificates / approvals



Technical data

general

nominal cross section	95 mm ²
color	red
number of levels	1
number of clamp positions per level	2
width/grid dimension	25 mm
insulating housing	PA
inflammability class of insulation material acc. with UL94	V0
mounting method	DIN rail (top hat rail)

technical data

rated current	232 A
rated voltage	1000 V
rated impulse voltage	8 kV
closing plate required	no
length	80 mm
width	25 mm

connection data

connection type	screw connection
connection type 1	screw connection
minimum cross section solid	35 mm ²
maximum cross section solid	95 mm ²

minimum cross section fine stranded	35 mm ²
maximum cross section fine stranded	95 mm ²
minumum conductor cross section (flex., stranded) with cable end sleeve	35 mm ²
maximum conductor cross section (flex., stranded) with cable end sleeve	95 mm ²
wire strip length	26 mm
torque conductor mounting	10 Nm

technical data UL/CSA

cross section UL	2-4/0 AWG
voltage UL	600 V
current factory wiring	230 A
current field wiring	230 A
cross section CSA	2-4/0 AWG
voltage CSA	600 V
current CSA	230 A

classification

ETIM 9.0	EC000897
----------	----------

product compliance

REACH-SVHC conformity status	compliant
------------------------------	-----------

Accessories

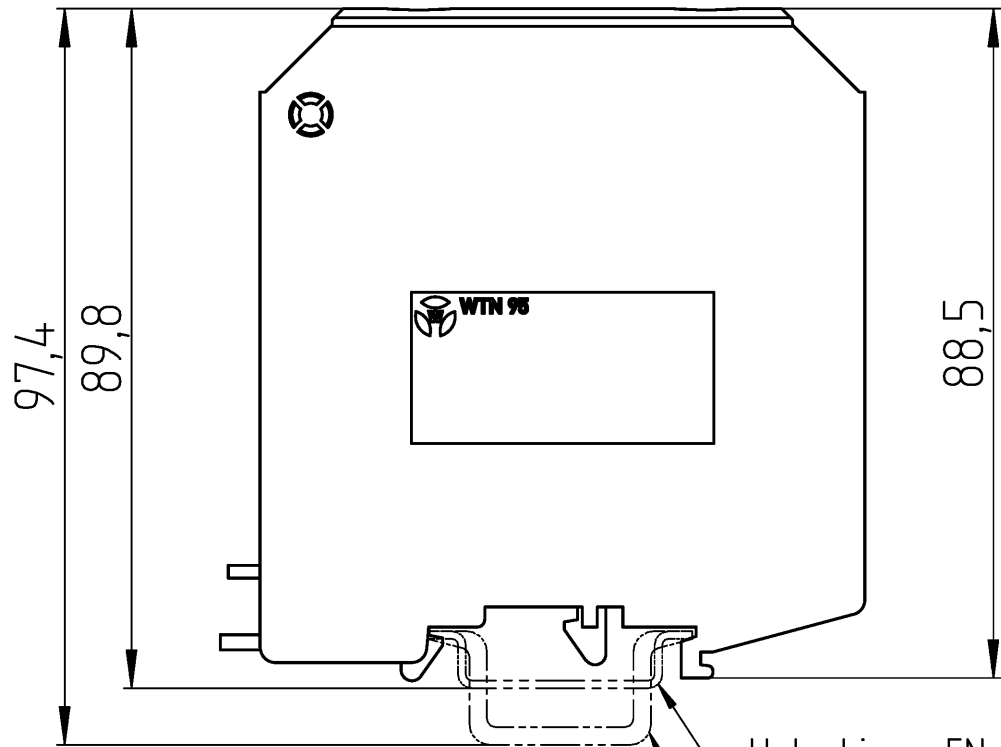
Commercial Art.No.:	Article-type description:	Description:
0D.202.7281.0	marking strips WML 9.8/60	marking strips WML 9.8/60 color white
0D.210.7056.0	marking plate WMP 10-10	marking plate WMP 10-10 modular spacing 10 mm, color white

A
Alle Rechte vorbehalten
All rights reserved
Vertraulichkeitsklasse
Confidentiality Class: Vertraulich
Confidential

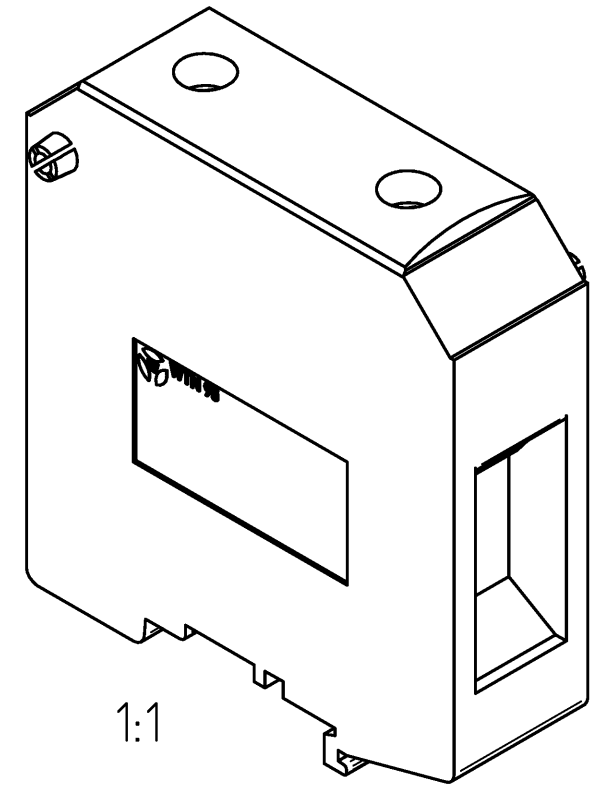
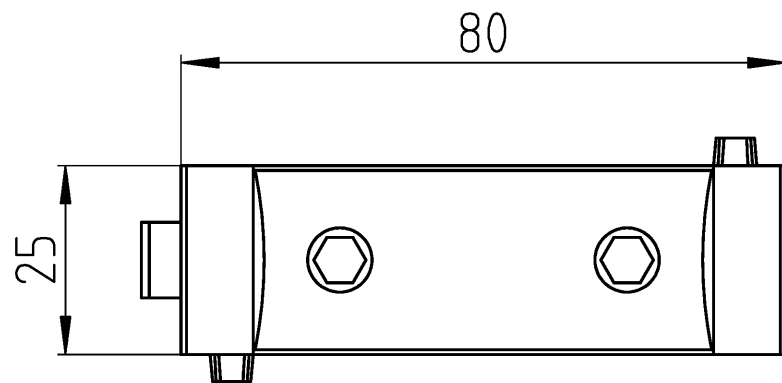
B
These dimensions will be especially checked at delivery
Only inspection dimensions
With /E marked dimensions are only valid for internal use

C
Diese Maße werden bei Abnahme besonders geprüft
Ausschließlich Prüfmaße
Mit /E gekennzeichnete Maße sind nur für interne Zwecke gültig

F



Hutschiene EN 60715-35x7,5
/mounting rail EN 60715-35x7,5
Hutschiene EN 60715-35x15
/mounting rail EN 60715-35x15



Weitere Daten siehe KATALOG oder eKatalog
additional data see CATALOG or eCATALOG
www.wieland-electric.com
eshop.wieland-electric.com

Tolerierung Size ISO 14405 © / Tolerance system Size ISO 14405 ©. (This ISO-standard describes the envelope principle. According to the envelope principle the deviations of form and parallelism are limited by the size tolerances).		ja/yes <input checked="" type="checkbox"/> Stoffverbots- und Deklarationsliste nach WN 5020.010 ist einzuhalten. Conformity with Wieland document WN 5020.010 e (list of prohibited / declarable hazardous substances) to be declared!					
Freitoleranz nach General tolerance		CAD - Zeichnung, keine manuellen Änderungen CAD - drawing, no manual modifications allowed		1. Verwendung: First Use:		Blatt: Sheet: 1 von 1 of 1	
		Werkstoff / Material		Tag/Date		Name	
				gezeichnet drawn		24.10.2025 Burger	
		Maßstab / Scale		Elektronische Freigabe Electronic Release		Zeichnung Nr. / Drawing No.	
		1:1				T 5D.S95.0055.0 13K	
		Vol. mm³		Dfl./Srf. mm²		Ersatz für / Replacement for:	
				Type		Benennung/Title	
		Index		Datum / Blatt Date / Sheet		DURCHGANGSKLEMME	
		Änderung / Revision		wieland		feed-through terminal	

Bestell-Nr. /order no.	Typ /type	Farbe /colour
5D.S95.0055.0	WTN 95	grau/grey
5D.S95.0055.5	WTN 95 RT	rot/red
5D.S95.0055.6	WTN 95 BL	blau/blue